

## RUN-PWR® **III**ST ADVANCED FULL SYNTHETIC

API SP / ILSAC GF-6A SAE 0W-20

Exclusive technology with three synthetic base stocks (PolyAlphaOlefin, Ester and Group III).

Higher fuel economy benefits.



Protects GDI (Gasoline Direct Injection) engines from low-speed pre-ignition (LSPI) and protects timing chain wear.



Increases Oil Change Intervals by its improved performance of oxidative stability.



It's outstanding cold start behavior guarantees optimum lubrication from start-up.

## RUN-PWR® FULL SYNTHETIC

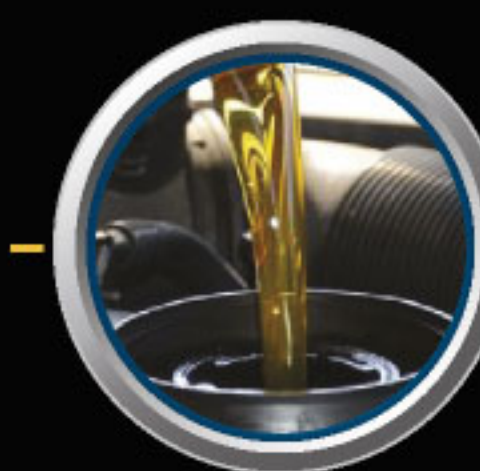
API SP / ILSAC GF-6A SAE 5W-20 & 5W-30

Provides a key benefit against low speed pre-ignition (LSPI).

Improved fuel economy.



Protection against deposit formation in engine.



Reduced oil consumption and decreased evaporative loss.



Perfect for high-tech engines such as TGI and Start-Stop.

## RUN-PWR® SYNTHETIC BLEND

API SP / ILSAC GF-6A SAE 10W-30

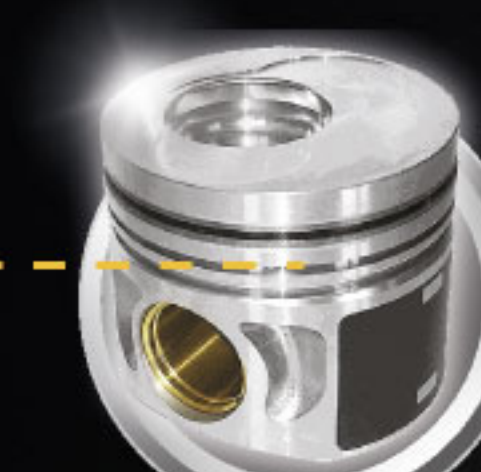
Prevents environmental pollution and protects catalytic systems.

Exceptional motor protection, due to its lubricating film which helps to extend engine's life even under hard operating conditions.

Titanium technology provides exceptional protection, cleanliness and optimal engine performance.



Improved protection against sludge and harmful deposits.



Outstanding rust and corrosion protection.

ONLY AT  
**Walmart** 